



FRESH ACCESS™

INSTALLATION INSTRUCTIONS

ECO-TOUCH® PROGRAMMABLE TOUCH SCREEN WALL CONTROL

*Compatible Fresh Access ERV models: AN035NSEDVA/AA, AN075NSEDVA/AA, and AN120NSEDVA/AA

CAUTION

Failure to comply with the following can cause erratic operation of the unit:



Disconnect the power to the HRV/ERV unit before installing the ventilation control. Ensure that power is reconnected once ventilation control has been installed. Failure to disconnect power before installation could damage the Controller.

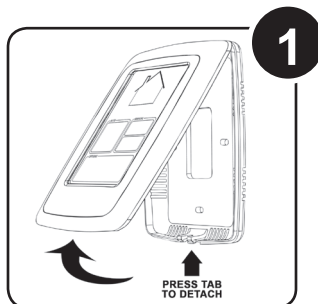
- Never install more than one central ventilation control per unit.
- Keep control low voltage wiring at least 1 foot (305mm) away from motors, lighting ballasts and light dimming circuits. Do not route control wiring alongside house power wiring.
- Ensure the wires are securely connected to the unit and wall control.

BEST PRACTICES

For optimal operation of the ventilation control, the following best practices are recommended during installation:

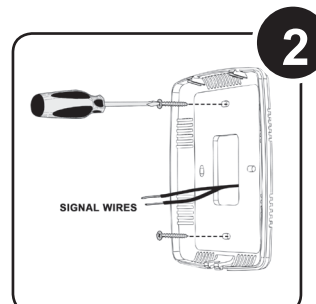
- The location of the ventilation control could affect the optimum performance. Therefore, it is recommended that the wall control be installed in a central location, away from direct sunlight and other sources of direct heat or cold such as an outside wall or adjacent to windows.
- Do not install ventilation controller on wall where cavity is opened to other areas. Example: Furnace return in wall cavity. If so, seal the back plate center opening with tape.

INSTALLATION STEPS



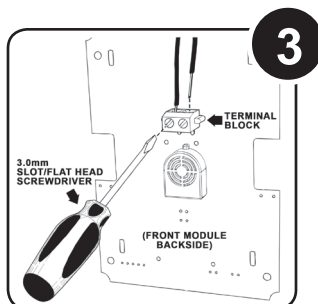
Detach front module from back plate by pressing the tab (located at the bottom of the control casing).

NOTE: Be sure not to exert too much pressure on the tab.



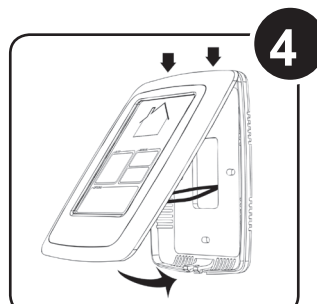
Guide the signal wires (2) through the central opening of the back plate and mount this plate to either a standard electrical device box or directly to the wall using screws. If required, use wall anchors.

NOTE: Be sure the screws are secure but do not over tighten. This may result in damage to the back plate.



Insert signal wires (2) into the terminal block, located on the backside of the front module. Secure them in place by tightening the terminal screws using a small 3.0 mm slot/flat head screwdriver (not included).

NOTE: The terminals are not po-larity sensitive.



Attach front module to mounted back plate, first by hooking the top of the front module to the top clips of the back plate, then by pressing the bottom of the front module until you hear a 'click'. Ensure the ventilation system operates correctly.

NOTE: Be careful not to pinch or trap signal wires when attaching the front module to the back plate.

5 Leave operating instructions with home owner.

Troubleshooting

If error code 01 is displayed on the touchscreen control, disconnect the power to the ERV for 10 seconds and re-connect the ERV to power.