

Date: 01/29/2019

Subject: FJM Wall Mount Unit: Fan Off in Heating Thermo Off

Models: AJ0\*\*JNADCH/AA

## FJM Wall Mount Unit: Fan Off in Heating Thermo Off

Factory programming of FJM (Free Joint Multi) wall mounted indoor units (AJ0\*\*JNADCH/AA) keeps the indoor fan at a low speed setting during Heating Thermo Off (unit in Heat Mode, set temperature has been satisfied) while leaving the EEV (electronic expansion valve) open at a minimum step to prevent refrigerant and oil migration to the indoor coil. In rare instances, this may cause zones to overheat on some projects.

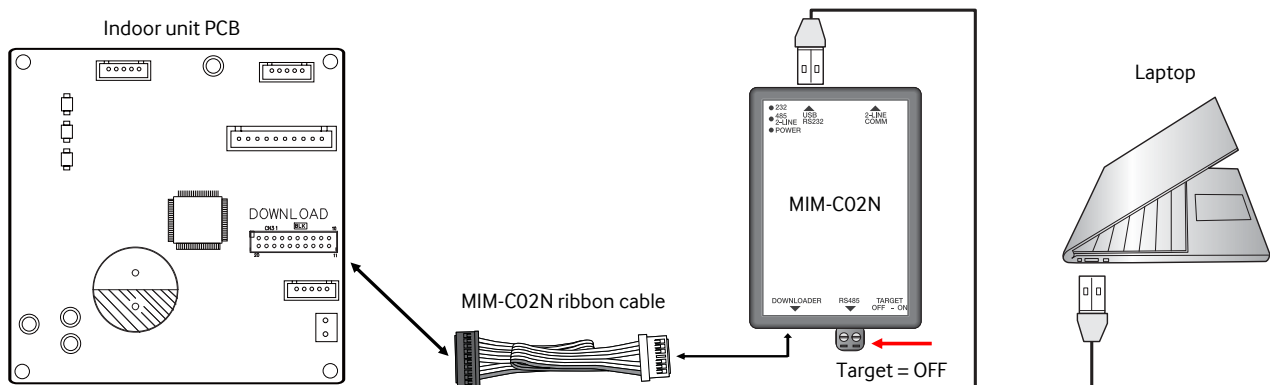
Overheating issues for the zone may be alleviated by reprogramming the affected indoor unit with a modified ".hex file" to turn the indoor unit fan off while the unit is in Heating Thermo Off. Reprogramming is done with a MIM-C02N service tool (sold separately) and Samsung GMan V2.0 programming software. This should only be done if room or space temperature is being sensed remotely via external temperature sensor (MRW-TA) or by a wired controller.

- External temperature sensor and/or wired controllers are purchased separately
- Samsung GMan software can be downloaded from [www.samsunghvac.com](http://www.samsunghvac.com)
- MIM-C02N (S-Convertor service tool) can be purchased from your local distributor or sales representative
- Disassembly of the indoor unit is necessary to gain access to the indoor unit main PCB (printed circuit board). Reprogramming of the PCB is done by connecting the MIM-C02N service tool directly to the "DOWNLOAD" connection on the main PCB. Please refer to the FJM service manual for complete details of disassembly.
- Reprogramming steps are listed below. Please contact Samsung HVAC Technical Support for the .hex file.

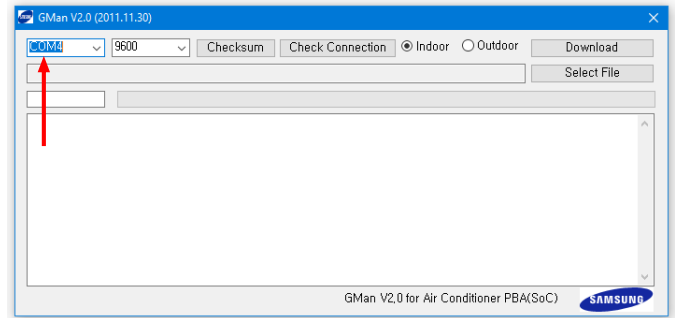
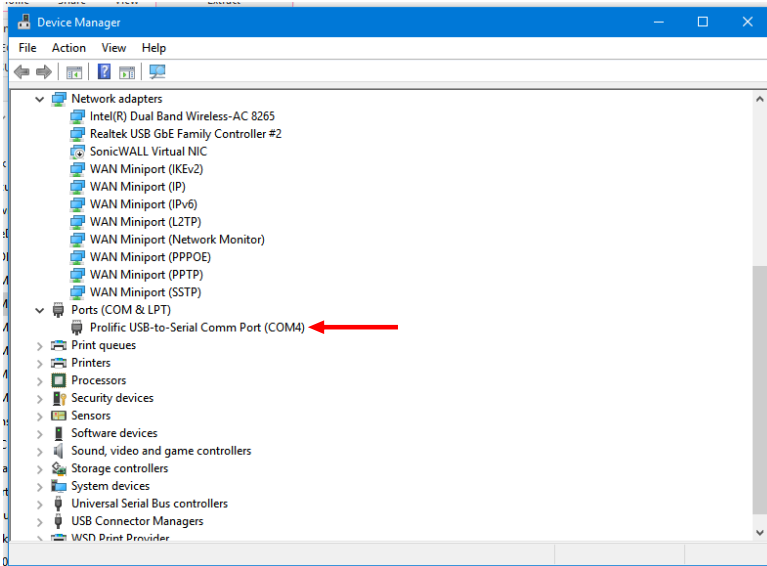
### Downloading firmware with Samsung GMan V2.0 software

The following steps can be used after disassembling the indoor unit to gain access to the main PCB and downloading the GMan software. MIM-C02N service tool is required. Please be sure to disconnect power before any work is performed on the system. Failure to disconnect power before performing this procedure could result in injury or death and damage to the equipment, service tool, or your computer.

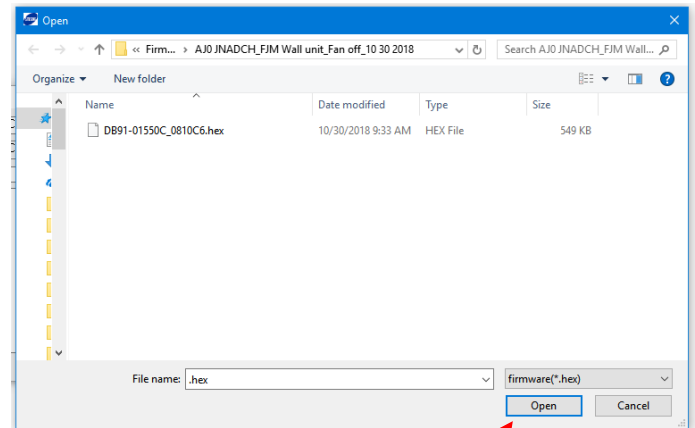
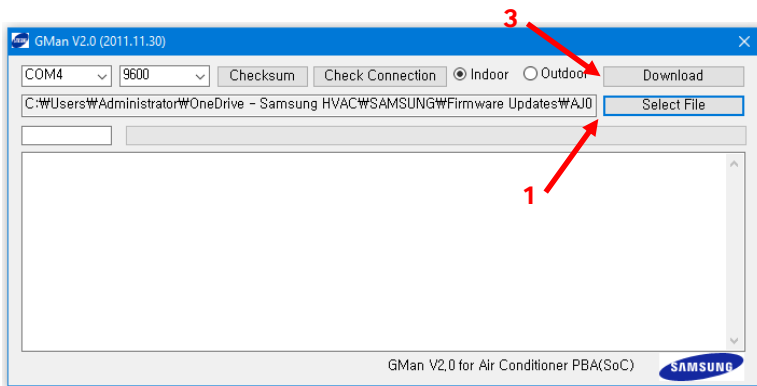
1. Connect the MIM-C02N service tool to the PCB (download port) and your laptop. Please make sure the "Target" switch on the service tool is in the "OFF" position.



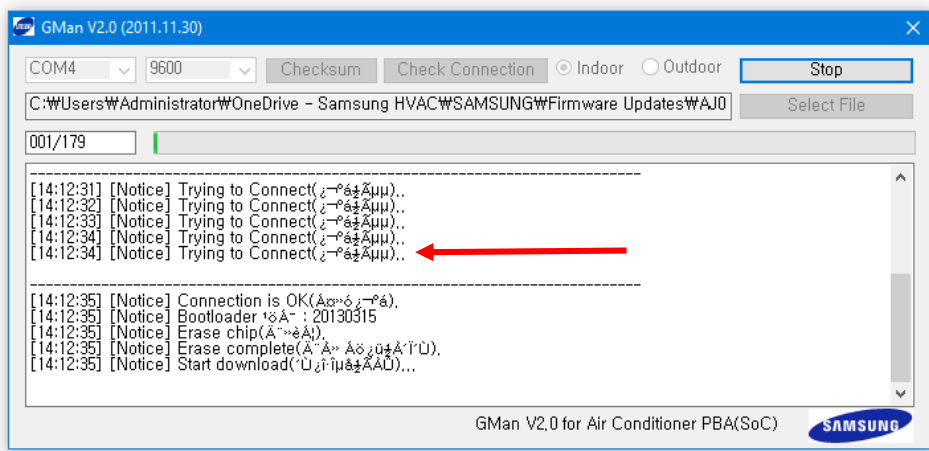
2. Open the Samsung GMan software. Check the "COM port" connection in your computer's "Device Manager", and change the selection in GMan if necessary.



3. Select the new ".hex" file by clicking "Select File". Then click "Download".

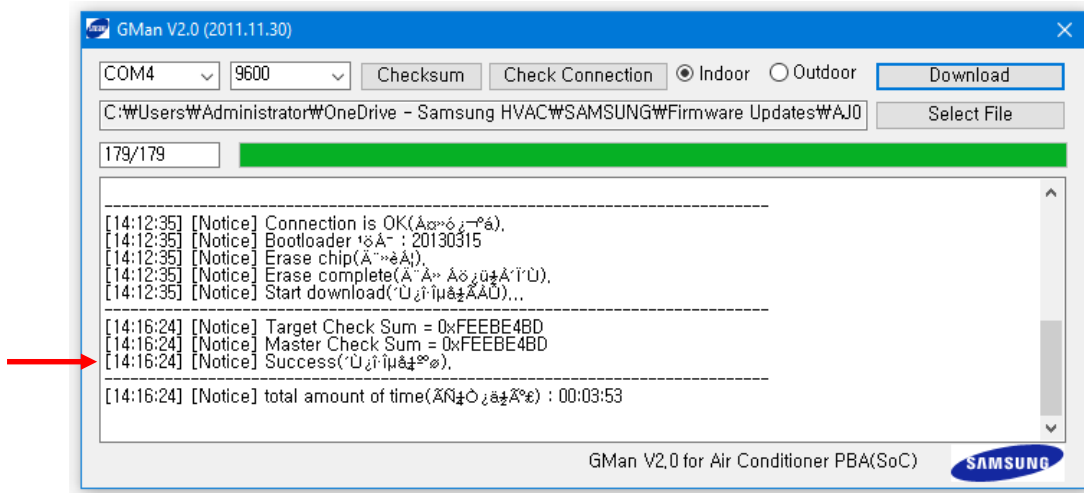
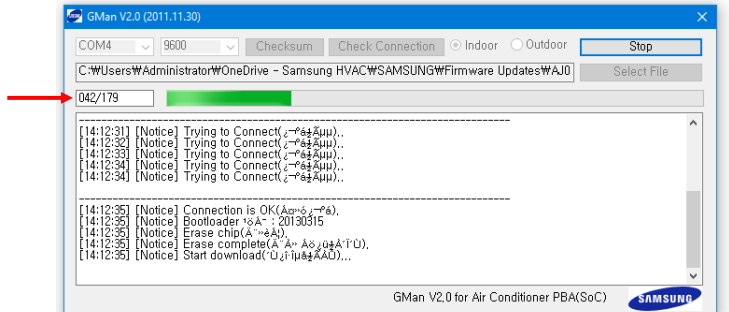
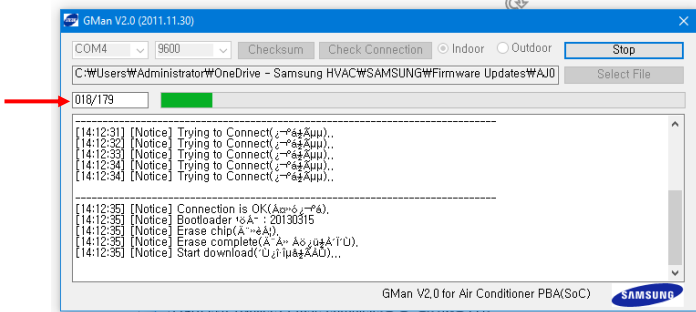


4. When "Trying to Connect" appears, turn the Target switch on the MIM-C02N service tool to "ON".



Target = ON

4. Progress of the download will be displayed. When "Success" is displayed and the progress bar is completely green, reprogramming is complete. Turn off the Target switch. Disconnect the service tool, and reassemble the unit (refer to the FJM service manual). Double check that all electrical connections are secure.



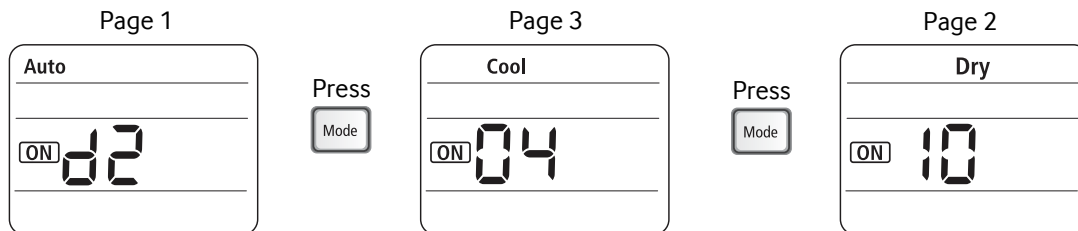
**External temperature sensing/reduced fan operation setting**

After the firmware update, the unit must be programmed for external temperature sensing and reduced fan operation. This is done by modifying segment 4 of the installation option code. Setting the installation option code can be done via wireless remote control or wired controller.

**Setting with wireless remote control**

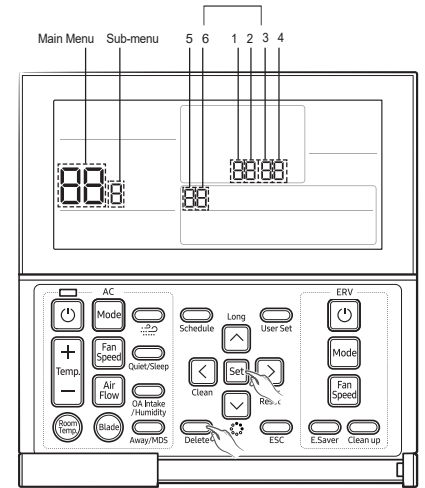
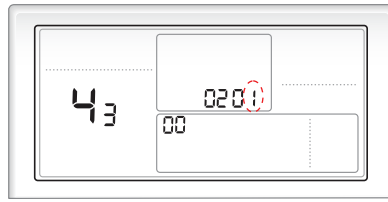
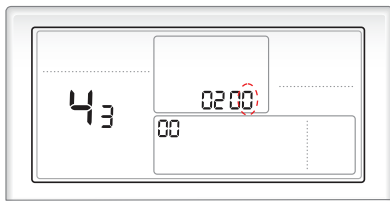
To enter the service mode, remove the batteries and wait for the screen to go blank. While holding the temperature up and down buttons, replace the batteries. You should have "00" displayed on the remote. Use the FAN DOWN button to adjust the segment on the left and the FAN UP button to adjust the segment on the right to enter the programming code as noted below.

1. Press the fan down button to change the segment on the left to "d".
2. Press the fan up button to change the segment on the right to "2".
3. Press the MODE button to advance to the next page. This page will display COOL and ON.
4. Press the fan down button to change the segment on the left to "0".
5. Press the fan up button to change the segment on the right to "4".
6. Press the MODE button to advance to the next page. This page will display DRY and ON.
7. Press the fan down button to change the segment on the left to "1".
8. Leave the segment on the right at "0".
9. Once the code is entered into the controller, press the power button several times while pointing the remote at the unit.
10. Remove the batteries. After the screen goes blank, replace the batteries and cover to resume normal controller use.



**Setting with wired controller MWR-WE13**

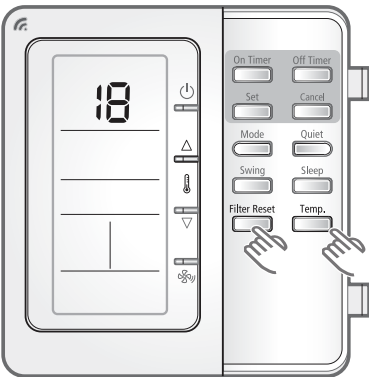
1. Hold Set and Delete for 5 seconds to enter the service settings mode.
2. Press the up arrow button, select main menu "4".
3. Press the right arrow button to advance.
4. Press the up arrow button to select sub menu "3".
5. Press the right arrow button until advanced to the fourth segment (segment will blink).
6. Change segment 4 to "1" by pressing the up arrow once.
7. Once entered, press SET to save.
8. Press ESC twice to exit the service mode.



**Setting with wired controller MWR-WH02**

1. Hold Filter Reset and Temp for 5 seconds to enter the service mode.
2. "18" will be displayed. Press the up arrow button until "18" is displayed (installation option menu).
3. Press Set to enter menu 18 option setting. Press Set one more time.
4. Press the up arrow button once to change segment 4 to "1" (the flashing segment will be modified).
5. Press the power button (above the fan up button) to send the code to the indoor unit.

Menu 18



Changing Segment 4

