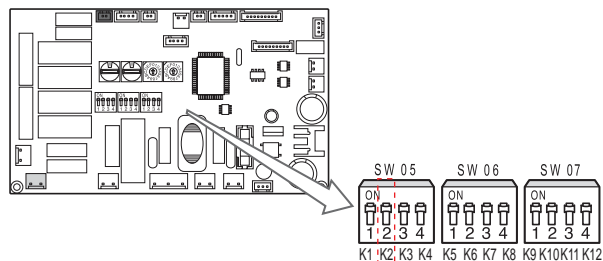


- When installing an MIM-H03U Wi-Wi adapter on a Samsung FJM multi-zone system, central control must be enabled.
- If central control is not enabled, the MIM-H03U will not be able to track the indoor units on the system
- Depending on the indoor unit model and controllers that are available, central control activation can be done in multiple ways.
- Slim Duct indoor unit option changes are done with dip switches. Mini 4-way cassette and high-wall unit option changes are done digitally with wired or wireless controllers.

### **Slim Duct indoor units (AJ0\*\*JNLDCH/AA)**

1. With the power off to the system, remove the screw on the electrical component box and remove the cover plate.
2. Adjust the DIP switch K2 (SW05) on the main PCB to the "OFF" position (down).
3. Re-install the cover plate and join the removed screw.



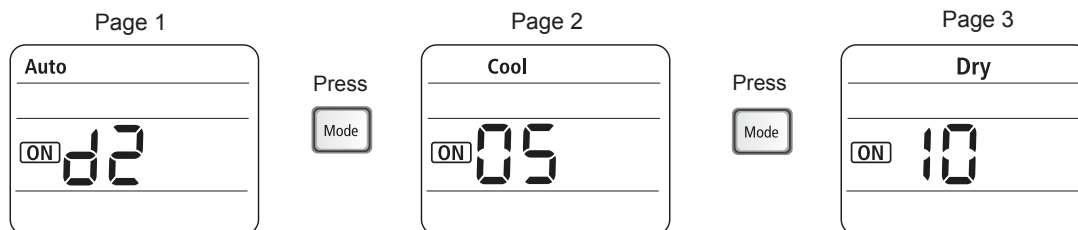
### **Mini 4-way cassette (AJ0\*\*JNNDCH/AA) and high-wall (AJ0\*\*JNADCH/AA) indoor units**

#### **Enabling central control with a wireless controller**

To enter Service mode, remove the batteries and wait for the screen to go blank. While holding the temperature up and down buttons, replace the batteries.

Use the FAN DOWN button to adjust the segment on the left and the FAN UP button to adjust the segment on the right to enter the programming code as noted below.

1. Press the fan down button to change the segment on the left to "d".
2. Press the fan up button to change the segment on the right to "2".
3. Press the MODE button to advance to the next page. This page will display COOL and ON.
4. Press the fan down button to change the segment on the left to "0".
5. Press the fan up button to change the segment on the right to "5".
6. Press the MODE button to advance to the next page. This page will display DRY and ON.
7. Press the fan down button to change the segment on the left to "1".
8. Leave the segment on the right at "0".
9. Once the code is entered into the controller, press the power button several times while pointing remote at the indoor unit.
10. Remove batteries. After the screen goes blank, replace batteries and cover to resume normal controller use.

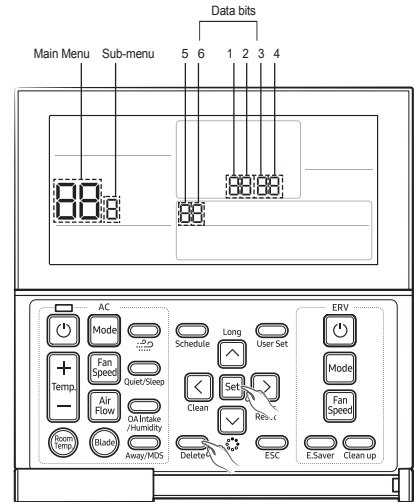


This document is for general reference only. Refer to installation manuals for complete installation instructions. Samsung HVAC maintains a policy of ongoing development, specifications are subject to change without notice.

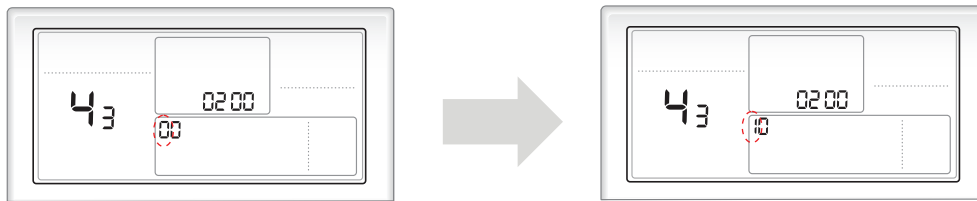
**Mini 4-way cassette (AJ0\*\*JNNDCH/AA) and high-wall (AJ0\*\*JNADCH/AA) indoor units (continued)**

**Enabling central control with MWR-WE13 wired controller**

1. Hold SET and Delete for 5 seconds to enter service settings mode.
2. Press the up arrow button, select main menu "4".
3. Press the right arrow button to advance.
4. Press the up arrow button to select sub menu "3".
5. Press the right arrow to advance to the fifth segment (press two times).
6. Change segment 5 to "1" by pressing the up arrow button once.
7. Once entered, press SET to save.
8. Press ESC twice to exit the settings section.



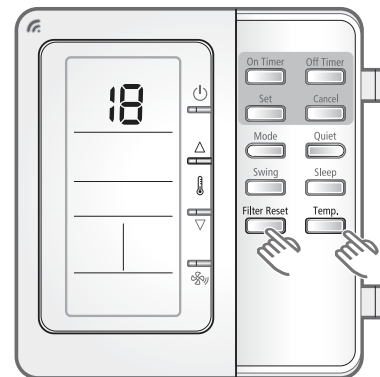
Changing Segment 5



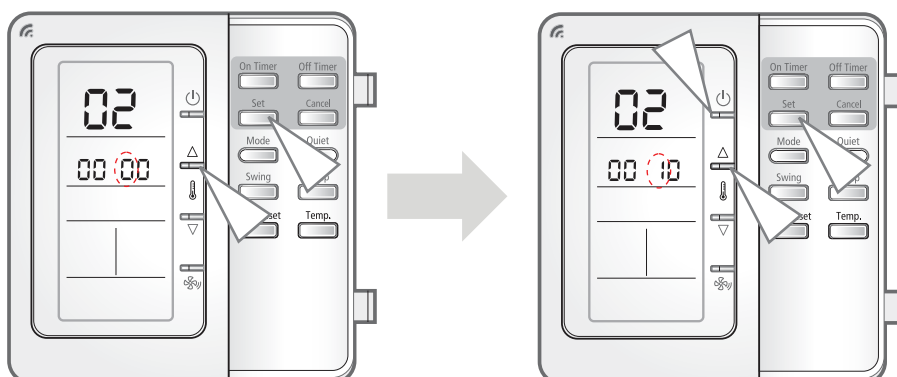
**Enabling central control with MWR-WH02 wired controller**

1. Hold FILTER RESET and TEMP for 5 seconds to enter service settings mode.
2. "1" will display. Menu 18 is where indoor unit option setting codes can be reviewed/changed. Press the up arrow button until "18" is displayed.
3. Press SET to enter menu 18 option setting. Press SET two more times.
4. Press the up arrow button once to change segment 5 to "1" (the flashing segment will be modified).
5. Press the power button (above the fan up button) to send the code to the indoor unit.

Menu 18



Changing Segment 5



This document is for general reference only. Refer to installation manuals for complete installation instructions. Samsung HVAC maintains a policy of ongoing development, specifications are subject to change without notice.