

Date: 05/24/2017

Subject: CAC "Cooling Only" Option Setting

Models: AC0***N*DCH/AA (CAC Wall Mount, Slim Duct, Duct S, 4-way Cassette, HSP Duct, 360 Cassette, MPAH)

CAC "Cooling Only" Option Setting

The majority of the Samsung CAC line-up for the United States and Canada consists of heat pump systems. Should the application or the customer request a cooling-only system, you can use this document to configure the unit to operate as a cooling only system. This can be done via two different methods:

1. Changing the Product Option Code via wireless remote, wired controller, or SNET Pro2 (preferred)
2. Setting the controller as "Cooling Only" in the Service Mode of a Wired Controller

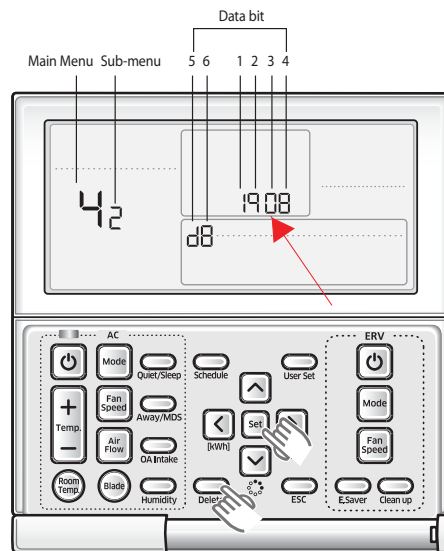
Each indoor unit has a unique Product Option Code, consisting of 24 segments, with various letters and numbers. To make a unit "Cooling Only", segment number 9 needs to be changed to "0". The example below details how to identify segment number "9".

Sample Product Option Code: 01xxxx-1x~~x~~xxx-2xxxxx-3xxxxx

↑
Segment number 9

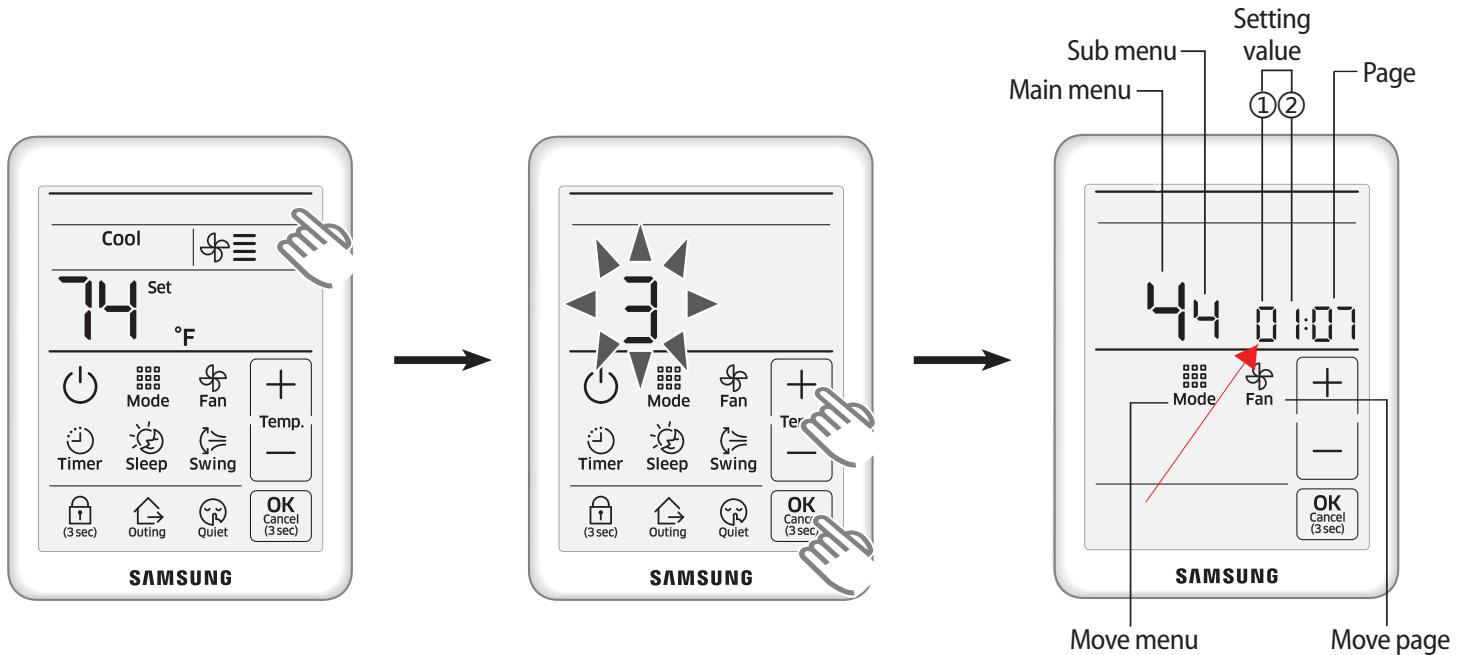
Method 1: Modifying the product option code via wired controller, SNET Pro2 Service Software, or wireless remote.

MWR-WE10N / MWR-WE11N: Enter service mode by holding "Set" and "Delete". Press the up arrow button 3 times to set the Main Menu as "4". Press the right arrow button. Press the up arrow button once to set the Sub Menu as 2. Press the right arrow button 4 times. Segment 1 should be "1" and segment 3 should be flashing. Press the up or down arrows to change segment 3 to "0". Press "Set" to save, then press "ESC". Refer to the wired controller installation manual for full service mode instructions.

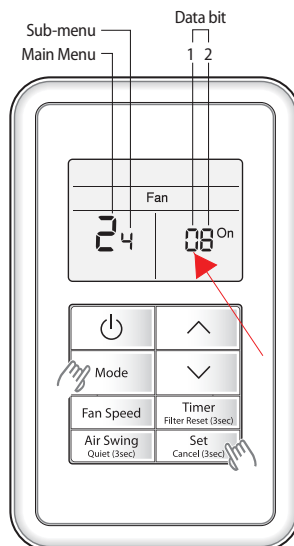


Note: above example shows MWR-WE11N. MWR-WE10N wired controller button layout and segments 5 and 6 location is slightly different. MWR-WE10N requires holding "Set" and "ESC" to enter service mode.

MWR-SH10N: Enter the service mode by holding the top right corner of the screen for 3 seconds (hidden button). Use the Up temperature button (+) to set to "3", and press "OK". Press the temperature up button (+) to change the Main Menu to "4". Press "Mode". Change the sub menu to "4". Press "Mode". Press "Fan" until the page shows "07". Change the flashing digit to setting value "0". Press "OK" to save. Hold "OK" to exit.

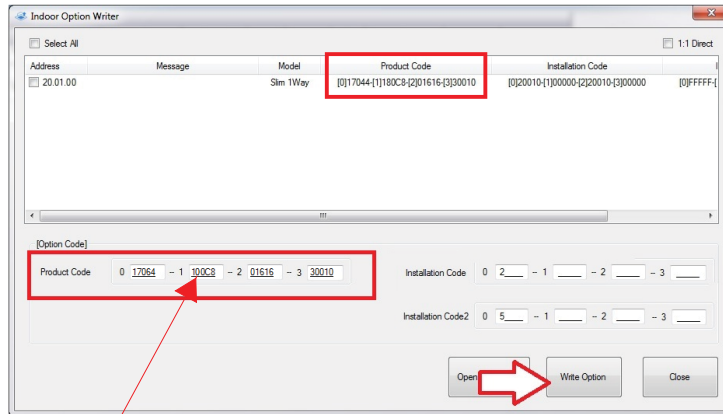


MWR-SHOON: Hold "Mode" and "Set" to enter service mode. Go to Main Menu 2 by pressing the up arrow once. Press "Timer" to advance. Press the up arrow three times until the Sub Menu is "4". Advance to the "page" where segment 9 of the indoor unit option can be changed by pressing "Timer" six times. The screen should show "Fan" and "On". Change the data bit on the left (data bit 1) to "0". Press "Set" to save. Press "Air Swing" button two times to exit service mode. Refer to the wired controller installation manual for full service mode instructions.



Programming via PC (SNET Pro2):

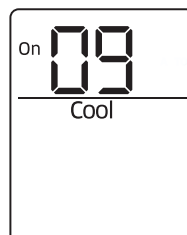
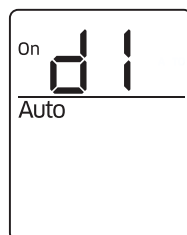
The MIM-CO2N S-Converter service tool and SNET Pro 2 service software is required. Connect to the system and go to the "Add On" tab, and "Indoor Option Writer". Copy the product option code from the top to the product option code setting section in the lower part of the screen. After copying, change segment 9 to "0". Check the box next to the indoor units, then press "Write Option".



Programming via Wireless Remote:

It is important to follow all steps of this document closely. Failure to enter the correct code detailed with can cause undesirable operation or malfunction.

1. Make sure the indoor unit is turned OFF by turning off the power supply at the outdoor unit. Wait for 5 minutes for the outdoor unit to completely power down, then re-apply power to the system.
2. Remove the batteries from the wireless remote and wait 10 seconds for the display to go blank. Once it is blank, hold down both the UP and DOWN temperature arrow buttons. While holding down both buttons re-insert batteries.
3. The display should now display "00" with an "Auto" indicator and an ON timer icon. If "00" does not display, repeat step 2.
4. Press the FAN DOWN arrow key the correct number of times to make the first digit "d". Once the first digit is programmed, use the FAN UP arrow key to program the second digit using the same method. The second digit should be set to "1".
5. Press the MODE button to proceed to the next page. The COOL symbol will appear on the display. Press the FAN UP arrow key the correct number of times to make the second digit "9". Leave the first digit on this page at "0".
6. Point the remote at the indoor unit and press the POWER button 5 times to program the code into the unit. All 3 lights on unit will flash together and the Operation lamp will flash. This indicates that the code has been accepted. Remove batteries, wait 10 seconds and re-insert batteries normally.



Method 2: Setting the controller as "Cooling Only" in the Service Mode of a Wired Controller

All wired controllers can be configured to skip heating mode as a selectable option by the occupant. It is recommended to use method 1 of this document. If only the controller is setup to skip heating mode, the mode can still be changed to heating operation via wireless controller or central controls.

To configure the wired controller as cooling only (skip heat mode), refer to the installation manual of the applicable wired controller.

CAC Product Option Codes

Note: Segment 9 should be changed to "0" to configure a unit to "Cooling Only"

MODEL	DESCRIPTION	Default Product Option Code	Cooling Only Product Option Code
AC018JN4DCH/AA	18k Btu/h, 4-Way Cassette	0140EF-1950D8-27343B-370005	0140EF-1900D8-27343B-370005
AC024JN4DCH/AA	24k Btu/h, 4-Way Cassette	0140EF-1950D8-274750-370005	0140EF-1900D8-274750-370005
AC030JN4DCH/AA	30k Btu/h, 4-Way Cassette	0140EF-1950E8-275A64-370045	0140EF-1900E8-275A64-370045
AC036JN4DCH/AA	36k Btu/h, 4-Way Cassette	0140EF-195439-276470-370045	0140EF-190439-276470-370045
AC042JN4DCH/AA	42k Btu/h, 4-Way Cassette	0140EF-19544A-277D8C-370045	0140EF-19044A-277D8C-370045
AC048JN4DCH/AA	48k Btu/h, 4-Way Cassette	0140EF-19545B-278CA0-370045	0140EF-19045B-278CA0-370045
AC018MNHDC/AA	18k Btu/h, CAC Duct S HSP, (default)	01B0EC-1E5411-27343B-374000	01B0EC-1E0411-27343B-374000
AC024MNHDC/AA	24k Btu/h, CAC Duct S HSP, (default)	01B0EC-1E5407-274750-374020	01B0EC-1E0407-274750-374020
AC030MNHDC/AA	30k Btu/h, CAC Duct S HSP, (default)	01B0EC-1E54B8-275A64-376020	01B0EC-1E04B8-275A64-376020
AC036MNHDC/AA	36k Btu/h, CAC Duct S HSP, (default)	01B0EC-1E5403-276470-376045	01B0EC-1E0403-276470-376045
AC042MNHDC/AA	42k Btu/h, CAC Duct S HSP, (default)	01B0EC-1E5424-277D8C-377045	01B0EC-1E0424-277D8C-377045
AC048MNHDC/AA	48k Btu/h, CAC Duct S HSP, (default)	01B0EC-1E5468-278CA0-377045	01B0EC-1E0468-278CA0-377045
AC018JNHDC/AA	18k Btu/h, CAC Duct, (DEFAULT)	01C0EC-1C8424-27343B-370005	01C0EC-1C0424-27343B-370005
AC024JNHDC/AA	24k Btu/h, CAC Duct, (DEFAULT)	01C0EC-1C747C-274750-370005	01C0EC-1C047C-274750-370005
AC030JNHDC/AA	30k Btu/h, CAC Duct, (DEFAULT)	0100EC-1A55D4-275A64-370005	0100EC-1A05D4-275A64-370005
AC036JNHDC/AA	36k Btu/h, CAC Duct, (DEFAULT)	0100EC-1A5902-276470-370005	0100EC-1A0902-276470-370005
AC042JNHDC/AA	42k Btu/h, CAC Duct, (DEFAULT)	0100EC-1A194D-277D8C-370005	0100EC-1A094D-277D8C-370005
AC048JNHDC/AA	48k Btu/h, CAC Duct, (DEFAULT)	0100EC-1A1A81-278CA0-370005	0100EC-1A0A81-278CA0-370005
AC018KN4DCH/AA	18k Btu/h, 360 Cassette	0100EF-1950D8-27343B-370005	0100EF-1900D8-27343B-370005
AC024KN4DCH/AA	24k Btu/h, 360 Cassette	0100EF-1950D8-274750-370005	0100EF-1900D8-274750-370005
AC030KN4DCH/AA	30k Btu/h, 360 Cassette	0100EF-19541A-275A64-370045	0100EF-19041A-275A64-370045
AC036KN4DCH/AA	36k Btu/h, 360 Cassette	0100EF-19548C-276470-370045	0100EF-19048C-276470-370045
AC042KN4DCH/AA	42k Btu/h, 360 Cassette	0100EF-19549D-277D8C-370045	0100EF-19049D-277D8C-370045
AC048KN4DCH/AA	48k Btu/h, 360 Cassette	0100EF-1954AF-278CA0-380045	0100EF-1904AF-278CA0-380045
AC009KNLDCH/AA	9k Btu/h, CAC Slim Duct, (DEFAULT)	01C06C-1C7933-271A21-370000	01C06C-1C0933-271A21-370000
AC012KNLDCH/AA	12k Btu/h, CAC Slim Duct, (DEFAULT)	01C06C-1C7968-272328-370000	01C06C-1C0968-272328-370000
AC018KNLDCH/AA	18k Btu/h, CAC Slim Duct, (DEFAULT)	01C06C-1C7944-27343C-370000	01C06C-1C0944-27343C-370000
AC018KNZDCH/AA	18k Btu/h, Multi-position AHU	01E06C-105020-27343B-370005	01E06C-100020-27343B-370005
AC024KNZDCH/AA	24k Btu/h, Multi-position AHU	01E06C-105020-274750-370005	01E06C-100020-274750-370005
AC030KNZDCH/AA	30k Btu/h, Multi-position AHU	01E06C-105020-275A64-370005	01E06C-100020-275A64-370005
AC036KNZDCH/AA	36k Btu/h, Multi-position AHU	01E06C-105020-275A64-370005	01E06C-100020-275A64-370005
AC042KNZDCH/AA	42k Btu/h, Multi-position AHU	01E06C-105020-277D8C-370005	01E06C-100020-277D8C-370005
AC048KNZDCH/AA	48k Btu/h, Multi-position AHU	01E06C-105020-278CA0-370005	01E06C-100020-278CA0-370005
AC054KNZDCH/AA	54k Btu/h, Multi-position AHU	01E06C-105020-27A0B4-370005	01E06C-100020-27A0B4-370005

For additional product option codes to adjust ESP (External Static Pressure) settings for ducted units, please refer to the appropriate installation manual.