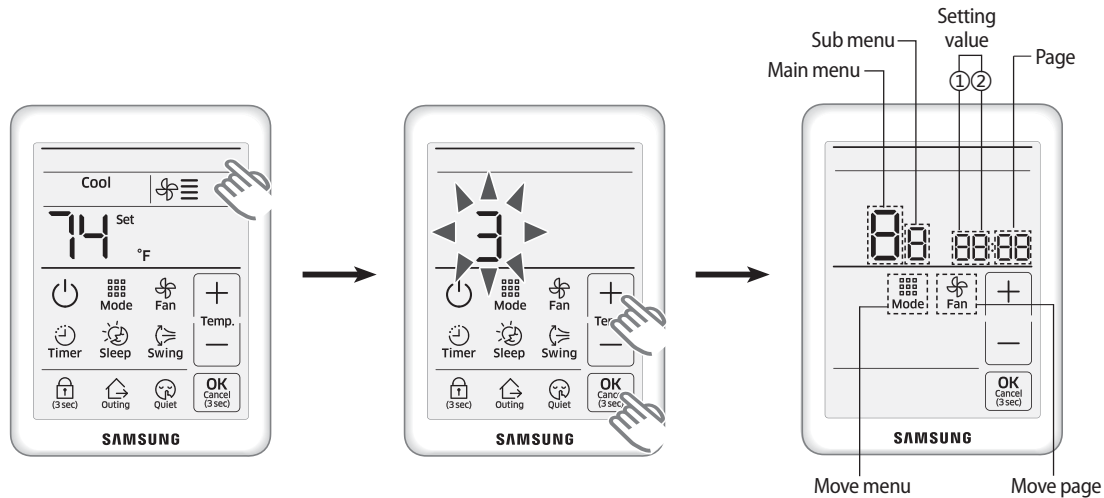


Date: 06/12/2017

Subject: MWR-SH10N Wired Controller Common Settings - Temperature Sensing Location, Temperature Unit Display °C to °F

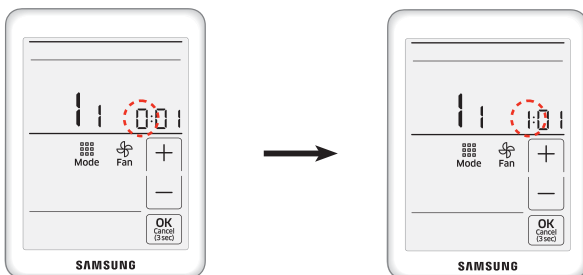
Models: CAC and DVMS Indoor Units

MWR-SH10N Common Settings



Temperature Sensing Location - Use Wired Controller Sensor

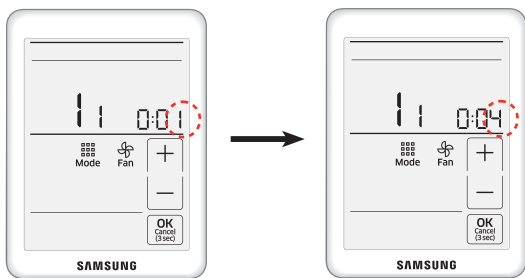
1. To enter Service Mode, press and hold the top right corner of the display (hidden button) for 3 seconds and release. A "0" should display on the screen.
2. Use the [+] button to change the "0" to a "3" and press the [OK] button. A "1" should now display on the screen.
3. Press the [MODE] button and a small "1" should display beside the large "1".
4. Press the [+] button to change the small "1" to a "2"
5. Press the [MODE] button and a flashing "0" ":01" should display to the right.
6. Press the [+] button to change the flashing "0" to "1" and press the [OK] to save this change.



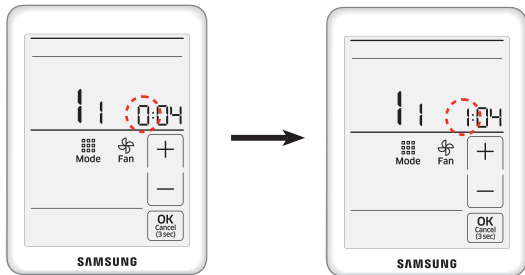
7. Press and hold the [OK] button for 3 seconds to exit Service Mode. The sensor in the wired controller will now be used.

Temperature Unit Display - °C to °F

1. To enter Service Mode, press and hold the top right corner of the display (hidden button) for 3 seconds and release. A “0” should display on the screen.
2. Use the [+] button to change the “0” to a “3” and press the [OK] button. A “1” should now display on the screen.
3. Press the [MODE] button and a small “1” should display beside the large “1”.
4. Press the [MODE] button again and a flashing “0” “:01” should display to the right.
5. Press the [FAN] button 3 times to change the “:01” to a “:04”.



6. Press the [+] button to change the flashing “0” to “1” and press the [OK] to save this change.



7. Press and hold the [OK] button for 3 seconds to exit Service Mode. The temperature display should now be shown in Fahrenheit.